

# Snowsport England

## Whole Sport Plan 09-13 Facilities consultation



# Introduction

## Content

- What do we know about the Snowsport facilities in England?
- Sport England 09-13 strategy and how it links to Snowsport England
- Snowsport England Outcomes 09-13
- Prioritising process
- Snowsport England Interventions
- Looking ahead: How will we make progress over the next 4 years
- Feedback



# Snowsport Facilities in England

How many facilities are there in England?

Where are these facilities?

What type of facilities are there?

How are these facilities managed/owned?



# Sport England 09-13 strategy

Please can you insert you slides here



# Snowsport England - Outcomes

Grow	7000	16 years +
Sustain	Improve people quality of experience Satisfaction Survey recent result of 81.1 ( target TBC)	
Excel	Increase Quantity and quality of talent pool (based on seeding system) this will be review with SE now they have an excel team in place	
PESSYP	Increase from 1900 to 2500 number of 5-18 year olds in accredited clubs	



# Prioritisation Process

- Will the Facility/Club engage with the process fully
- Type of slope indoor/outdoor
- Ownership
- Latent Demand
- Geographical location
- County Sport Partnership support
- Local Authority Priorities
- Snow mark /Club mark accreditation



# Sport England Support



Snowsport England Facilities, Performers, Instructors and Officials - West Midlands Region

Map includes drive time buffer/heat areas to nearest Snowsport England facility.

**Legend**

**Outdoor Slope**

**Indoor Slope**

**Length**

- less than 100m
- 101 - 150m
- 151 - 200m
- greater than 200m

◆ Unisex

**Dry Slope**

**Length**

- less than 100m
- 101 - 150m
- 151 - 200m
- greater than 200m

**SSE Instructors and Others Officials**

**Type**

- Alone Ski Course Leader
- Alone Instructors
- Freestyle Instructors
- Nordic Instructors
- Officials All Disciplines
- Snowboard Instructors

**SSE Performers**

**Type**

- Alone Performers
- ◆ Freestyle Performers
- ◆ Nordic Performers
- ◆ Snowboarding Performers

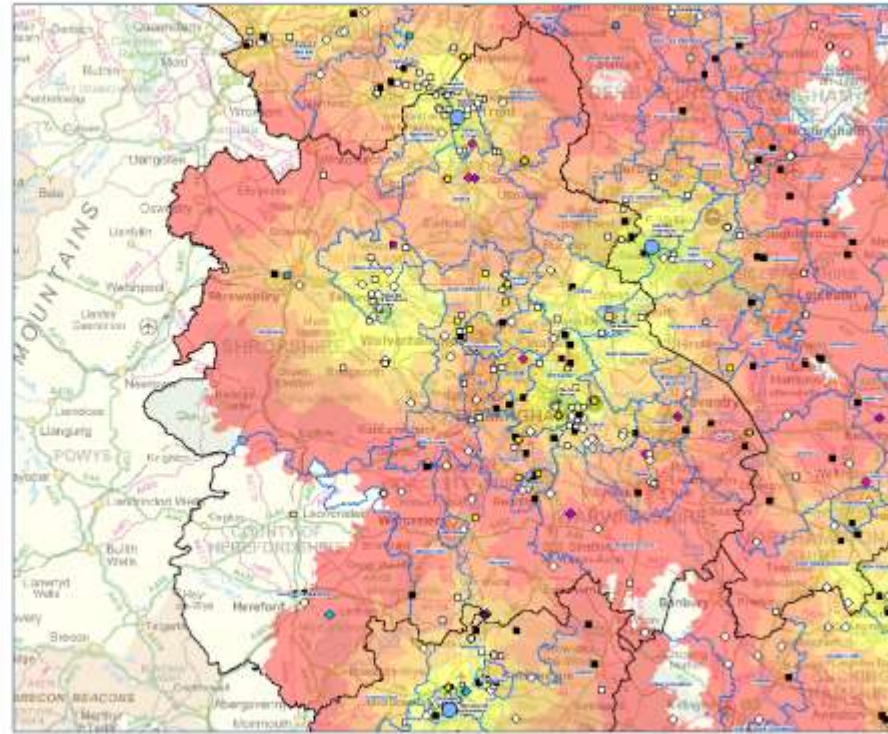
▭ Regions

▭ Local Authorities (LA)

**Drive time to nearest SSE facility**

**Car Travel**

- within 5 mins
- 6 - 10 mins
- 11 - 20 mins
- 21 - 30 mins
- 31 - 40 mins
- 41 - 50 mins
- 51 - 60 mins



© Crown Copyright. All Rights Reserved. Ordnance Survey Licence No. 100017123

Open Street Map Data. Mapbox Attribution: www.mapbox.com

Map data © OpenStreetMap contributors

Imagery © Mapbox

Map data © OpenStreetMap contributors



# Snowsport England Planned Interventions

**Intervention 1** –Increasing Participation and membership

**Intervention 2** – Clubs and Coaching

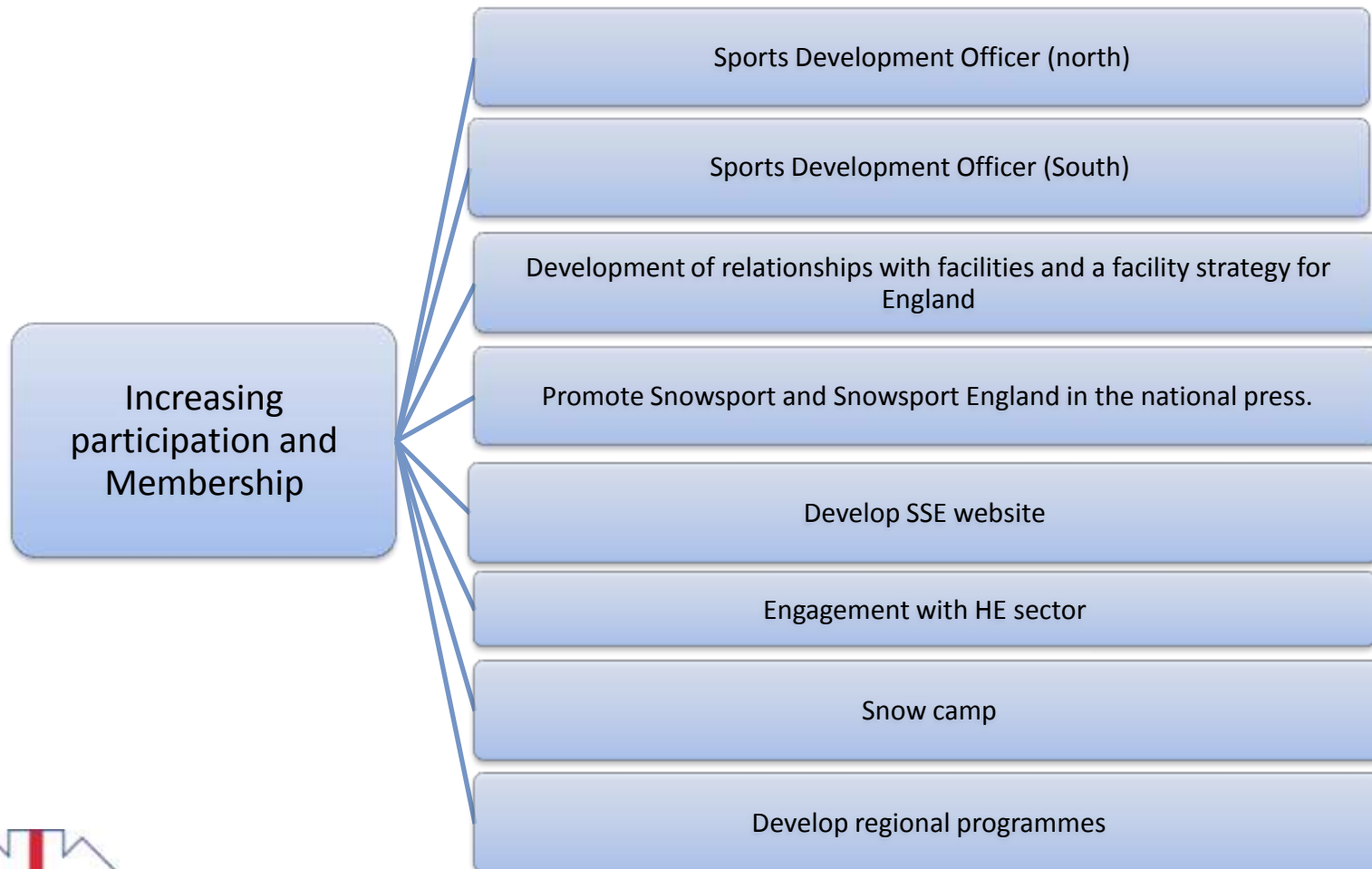
**Intervention 3** – Performance pathway and Talent ID

**Intervention 4** – Children and Young People (PESSYP)

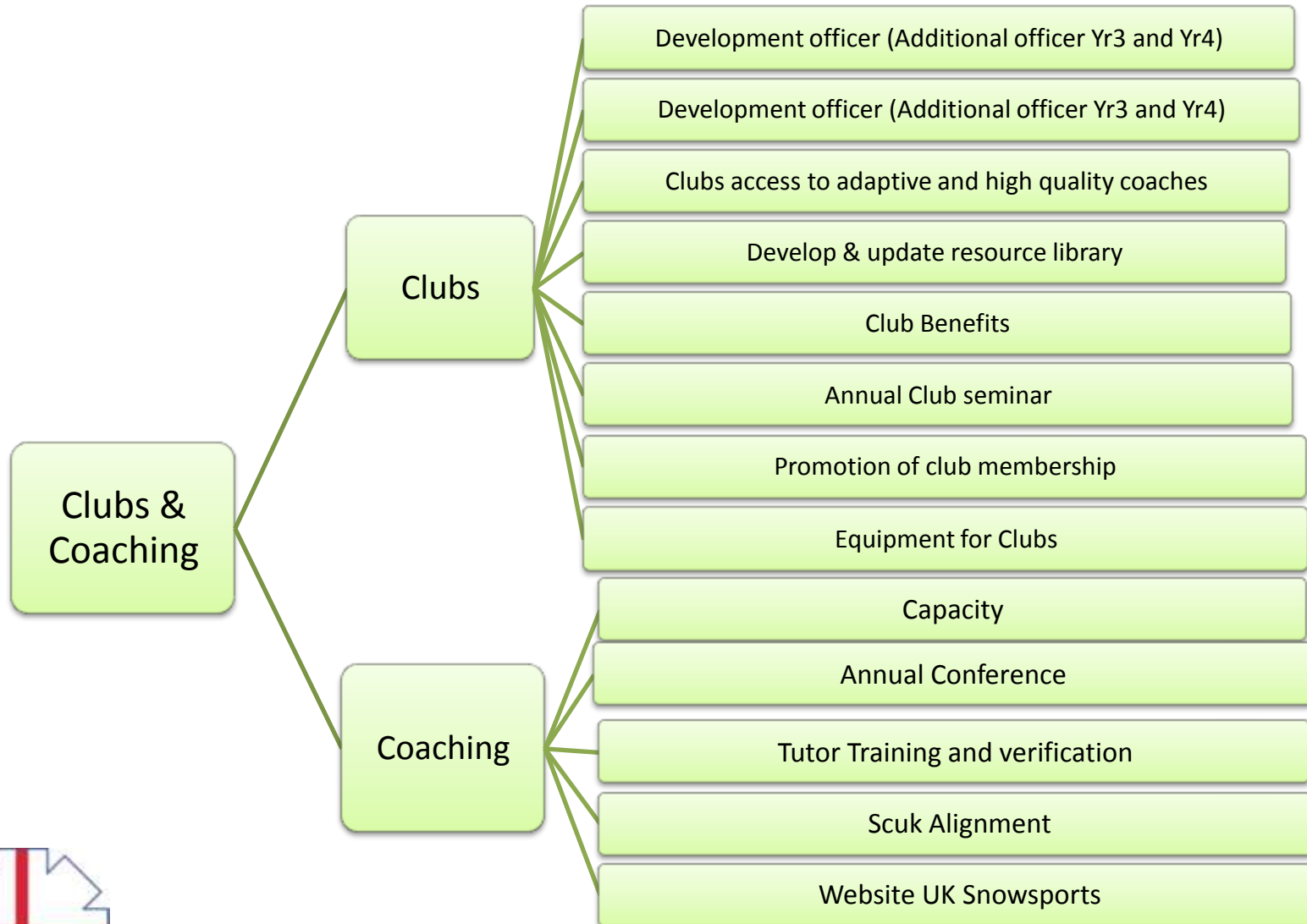




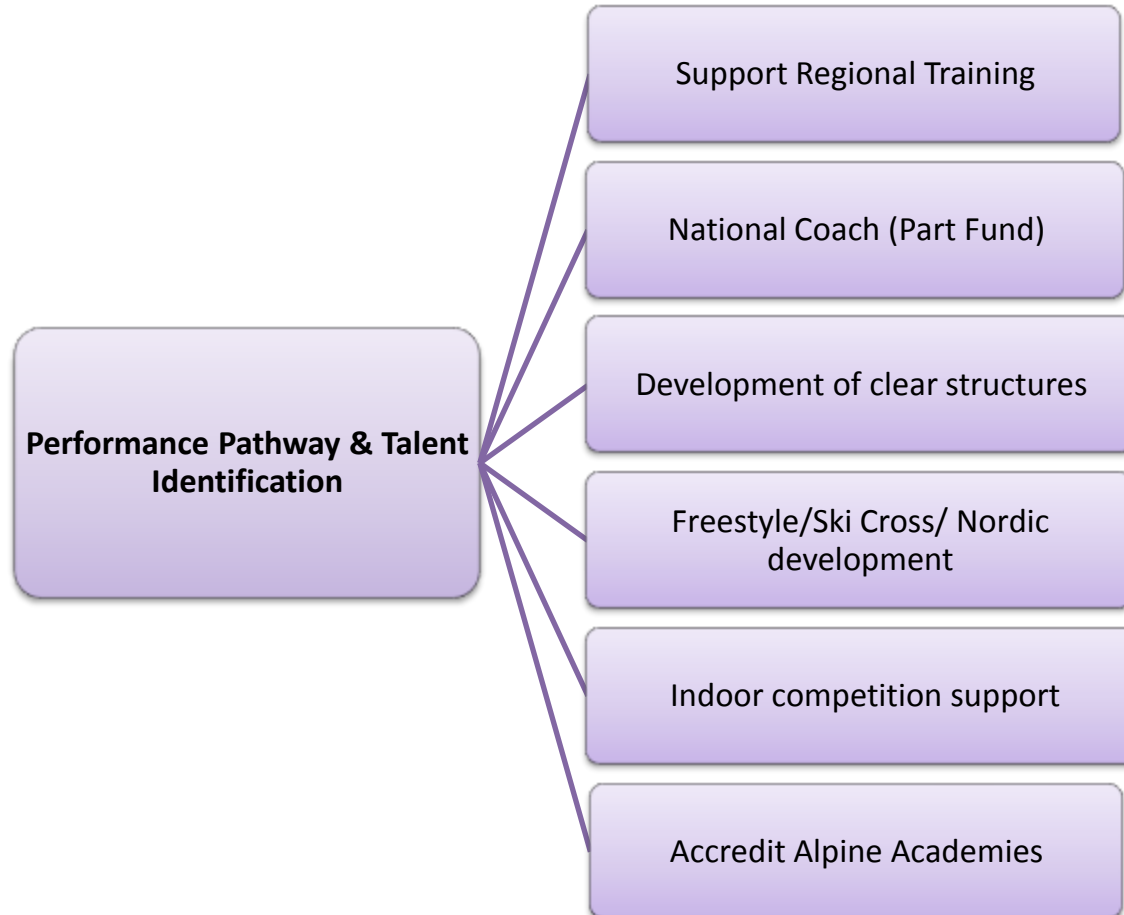
# Intervention 1 – Increasing participation and membership



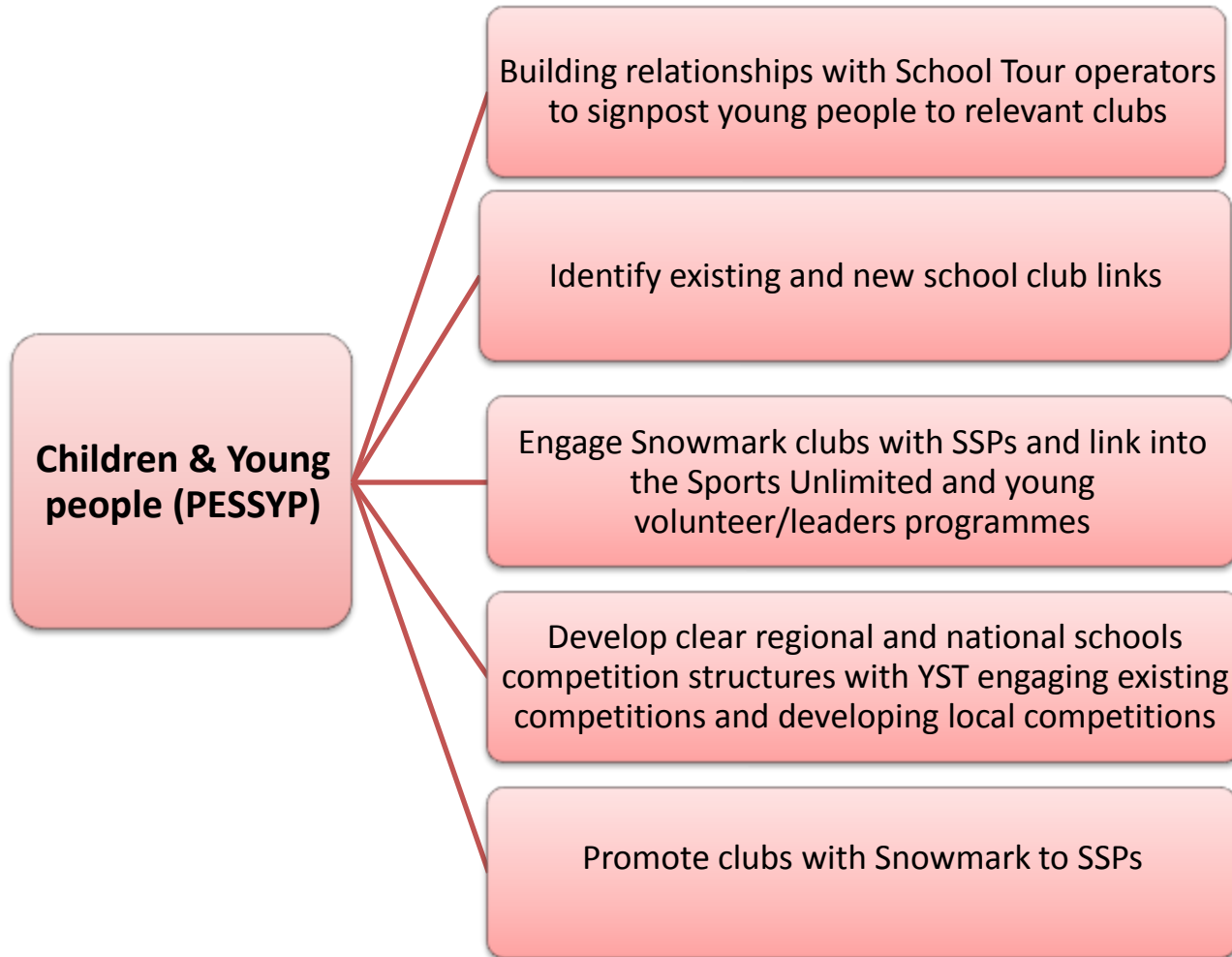
# Intervention 2 – Clubs & Coaching



# Intervention 3 – Performance Pathway and Talent Identification



# Intervention 4 – Children & Young People (PESSYP)



# What About New Facilities?

Snowsport England is not going to build facilities but we aim to influence development of current and new facilities to help the development of the sport and affiliated clubs.

What facilities do we need to develop the sport?

The mapping exercise is a starting point to look at the needs of the sport and we will be consulting further with the regions.



# Feedback

There are 3 ways you can feed back from this session

1. Fill in feedback form today
2. Email feedback to [tim@snowsportengland.org.uk](mailto:tim@snowsportengland.org.uk)
3. Verbal feedback today at our drinks reception 5.00

## Time line

31<sup>st</sup> October

13<sup>th</sup> November

End November

Jan – onwards

Facilities presentation

Deadline for feedback

Identification of prioritised clubs and facilities

Delivery of interventions



# Questions?

1. Do you agree with the priority process outlined? If not suggest other methods of prioritising?
2. Are there any particular areas that you can see will not work within the interventions or areas that will work well?
3. We plan to make this an annual consultation exercise. What other areas should we consult on?

